



GRAVELLY[®] TRACTORS



GRAVELLY® 424

DESIGNED FROM THE GROUND UP FOR RIDING EASE, POWERFUL PERFORMANCE!

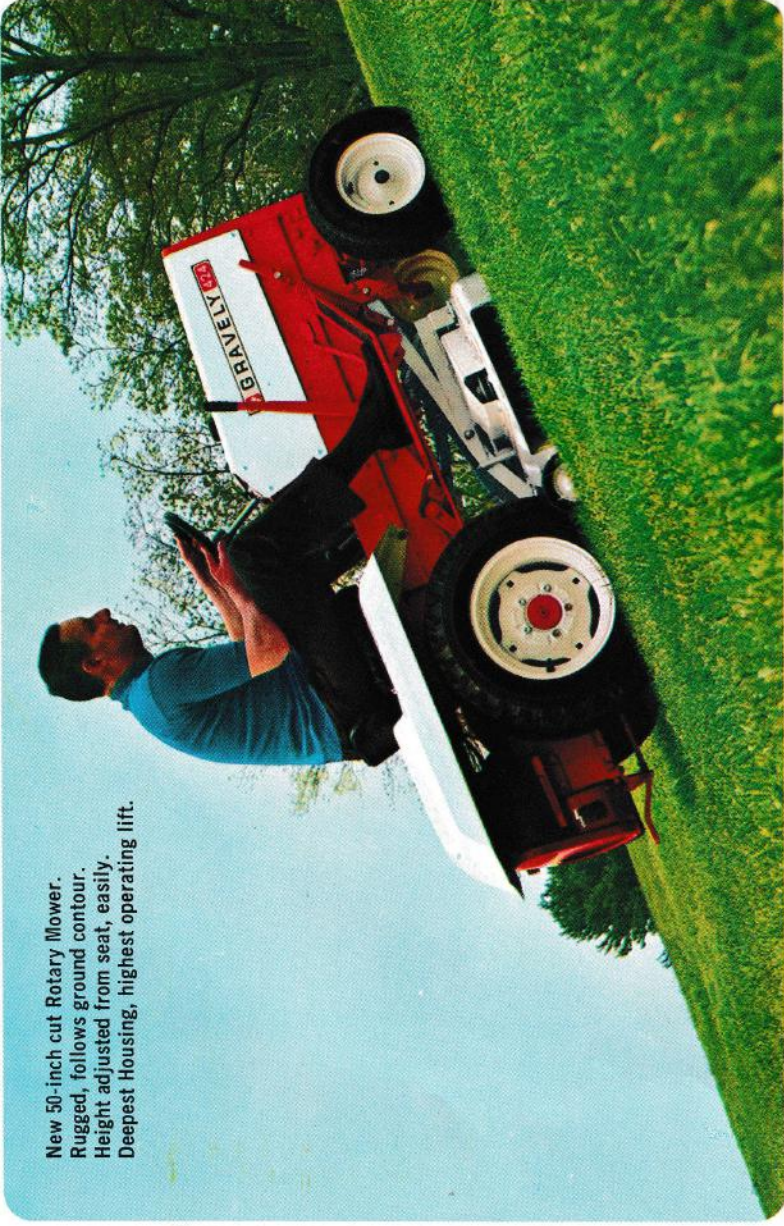
IT'S SHEER FUN to tackle the tough jobs with this quiet, sure-footed tractor. Swing aboard: Solid comfort in the padded seat; wide, comfortable footrests . . . ruggedness in every inch of deep-framed, steel sleekness. Be amazed at the power and quietness of the high-torque Gravelly engine . . . pleased with the nimble handling ease. Fall in love with the instant control; one lever, without clutching, for instant forward, neutral or reverse.

TRACTIONIZED rear-engine design gives you the traction that makes full use of the high-torque power from Gravelly's new engine . . . smooth and practically vibrationless . . . plus the lowest center of gravity in the industry for safety. Gives you the safest, most stable tractors ever for steep slopes, side-hill mowing.

ALL-GEAR DRIVE assures you of top performance where it counts . . . at the work being done. Power is transmitted directly from the engine crankshaft to and through the transmission to the implements by gears and splined steel shafts. The only belt is a generator belt.

IMPLEMENTS ATTACH IN MINUTES with no tools. Specially designed locking rings on splined steel shafts connect or disconnect power drives with a twist of the wrist. Convenience-designed latches and lock-pins attach or detach implements in seconds.

VERSATILE . . . a wide choice of lawn, garden and grounds tools fits the right tool to your job. And the Gravelly 424 puts the tool where it belongs to do the job best...in front, underneath, or trailing. With all-gear drive to ALL power tools, the Gravelly 424 was designed for *you!*



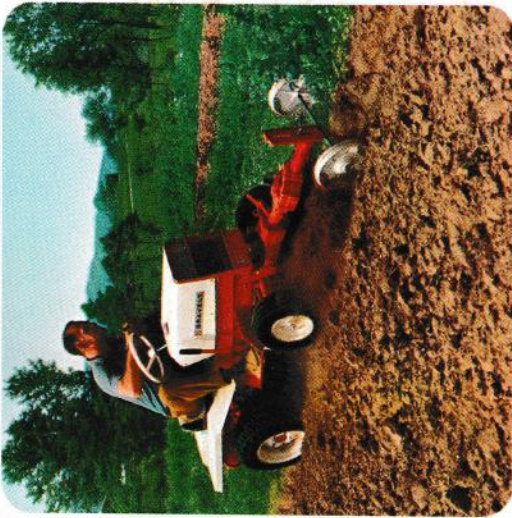
New 50-inch cut Rotary Mower.
Rugged, follows ground contour.
Height adjusted from seat, easily.
Deepest Housing, highest operating lift.



With Front Mount 40" Commercial Mower



GRAVELLY POWER FOR EVERY SEASON



PERFECT SEEDBED . . . What four-wheel tractor gives you power rotary plowing, in front . . . a perfect seedbed in one operation, while you go along for the ride? The Gravelly 424 . . . the one and only all-gear-drive tractor that powers Gravelly's famous Rotary Plow. Who said you couldn't garden with a compact tractor? Get on the Gravelly 424 and Go!



HAULING . . . Haul your problems away with the steel hauling Cart that handles a half-ton load, easily. Only one of many lawn care tools, including a lawn roller and a five foot seeder-spreader, that makes the Gravelly 424 truly a versatile source for total lawn and garden care. Attaches and detaches by pulling one pin.



SNOW REMOVAL . . . When blizzards howl, attach the 38" Gravelly Snow-blower . . . a two-stage blower that uses controlled hurricane-force winds to blow your snow troubles away. Blow the snow from one foot to 50 feet away. Or use the big, trip-type snowblade, 42 inches wide, that changes angle from your command position.

424 ATTACHMENTS:

- 50-inch Cut Rotary Mower
- 38-inch 2-stage Snowblower
- 42-inch Dozer Blade, Trip-type

Standard Gravelly Implements Recommended†

- 30-inch Rotary Mower (FM)
- 40-inch Commercial-40 Rotary Mower (FM)
- 18-inch Circular Saw (FM)
- 38-inch Power Brush (FM)
- 42-inch and 60-inch Sickle Mowers (FM)
- Rotary Plow (FM)
- 20-Gallon Sprayer (FM)
- Lawn Aerator
- Lawn Roller
- 5-foot Seeder-Spreader
- ½-ton Cart, Steel

Instrument Cluster:
Safety key and button start, Generator light, Throttle and Choke Levers, Opt. Cigar Lighter.



Control Cluster:
Speed Range . . . famous Gravelly Swiftmatic 8 . . . and Hi & Lo Gear. Four forward, four reverse speeds. PTO Clutch.

Rugged, Easy-Steering—Shortest Turning Radius, left and right

Implement Lift Lever . . . Lifts all front and Under-Mounted attachments. Easy.

Instant Control Lever. Forward, Neutral, Reverse Instantly, without clutching

12-V Battery, and Starter-Generator

Integral Flood-type Headlights. (Opt)

Infinite Position Implement Height Position lock.

Deepest, Strongest Welded Steel Frame

All-Gear and—Shaft Front Implement Drive

No Tool Implement Attaching and Detaching

Wide, Safe, Comfortable Footrests

Optional Wheel Weights, Front and Rear

Optional, Left Hand Standard. Brake. Independent Wheel Brakes, Right Hand

All-Gear-Drive for center-mounted implements

Big, full flotation tires

TRACTIONIZED POWER . . . Rear Engine, Gravelly Swiftmatic 8 transmission, ALL GEAR DRIVE Maximum power and stability

Safety Fender . . . no moving parts exposed. Raises for easy access to engine, transmission.

Comfortable, padded seat

Optional Wheel Weights, Front and Rear

Wide, Safe, Comfortable Footrests

Optional, Left Hand Standard. Brake. Independent Wheel Brakes, Right Hand

All-Gear-Drive for center-mounted implements

Big, full flotation tires

TRACTIONIZED POWER . . . Rear Engine, Gravelly Swiftmatic 8 transmission, ALL GEAR DRIVE Maximum power and stability

Safety Fender . . . no moving parts exposed. Raises for easy access to engine, transmission.

Comfortable, padded seat

Implement Lift Lever . . . Lifts all front and Under-Mounted attachments. Easy.

Instant Control Lever. Forward, Neutral, Reverse Instantly, without clutching

12-V Battery, and Starter-Generator

Integral Flood-type Headlights. (Opt)

Infinite Position Implement Height Position lock.

Deepest, Strongest Welded Steel Frame

All-Gear and—Shaft Front Implement Drive

No Tool Implement Attaching and Detaching

Wide, Safe, Comfortable Footrests

Optional Wheel Weights, Front and Rear

Optional, Left Hand Standard. Brake. Independent Wheel Brakes, Right Hand

All-Gear-Drive for center-mounted implements

Big, full flotation tires

TRACTIONIZED POWER . . . Rear Engine, Gravelly Swiftmatic 8 transmission, ALL GEAR DRIVE Maximum power and stability

Safety Fender . . . no moving parts exposed. Raises for easy access to engine, transmission.

Comfortable, padded seat

Optional Wheel Weights, Front and Rear

Wide, Safe, Comfortable Footrests

Optional, Left Hand Standard. Brake. Independent Wheel Brakes, Right Hand

All-Gear-Drive for center-mounted implements

Big, full flotation tires

TRACTIONIZED POWER . . . Rear Engine, Gravelly Swiftmatic 8 transmission, ALL GEAR DRIVE Maximum power and stability

Safety Fender . . . no moving parts exposed. Raises for easy access to engine, transmission.

Comfortable, padded seat

Optional Wheel Weights, Front and Rear

Wide, Safe, Comfortable Footrests

Optional, Left Hand Standard. Brake. Independent Wheel Brakes, Right Hand

All-Gear-Drive for center-mounted implements

Accessories and Optional Equipment

- Headlight-tail light kit
- Cigar Lighter
- Independent Wheel Brake, Right Hand
- Wheel Weights, Rear
- Wheel Weights, Front
- Tire Chains, Rear
- Weights, 30-inch Rotary Mower
- Lift Assist Kit

†Requires Front Adapter Kit and Front Drive Kit for front-mounted implements designated with (FM)

SPECIFICATIONS

- Engine: Gravelly, 4 cycle Air-cooled, 10 HP @ 3600 RPM
- Transmission: Automotive type, Planetary cone-type clutches
- Starter: Battery, 12 volt, Starter-Generator
- Tires: Tubeless, Lawn and Garden Tread
- Rear Axle Bearings: Needle
- Front Wheel Bearings: Ball
- Fuel Capacity: 4 U. S. Gallons
- Brake: Rear Wheel, Pedal with lock
- Drives: Gear and splined steel shaft



GRAVELY MiniBackhoe...

The Gravely MiniBackhoe is a real humdigger—a small package with the power and design to do the digging job fast, at less cost. Just watch it once—you'll be amazed at how fast the ditch unravels from in front of that fast-swinging bucket. All hydraulic controls—simple to learn, simple to operate. Powered by the rugged, long-lived Gravely Tractor. Not an Implement—sold only as a complete unit.

SPECIFICATIONS

Length: (with handles) 11'6"
 Front Pads, width: 6'5" (Retractable).
 Dual Wheel Width: 37"
 Boom Down, Height: 4'5"
 Boom Up to Max. Height: 5'6"
 Total Swing: 90°; To either side of center 45°
 Maximum digging depth: 5'
 Effective Reach: 6'6"
 Power Plant: Gravely Tractor. Trans-

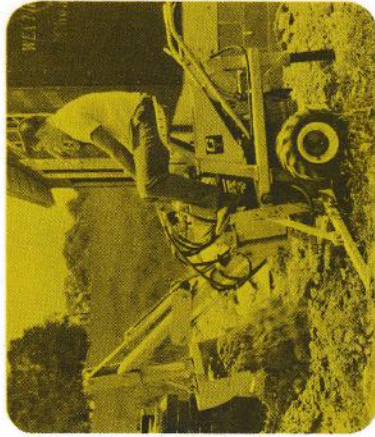
ports and operates a 2000 psi, gear-type hydraulic pump supplying power to 3 Spool control valves through 4000 psi hydraulic lines with heavy-duty fittings. Valves set at 1400 psi.

Construction: Welded frame, boom, and components.

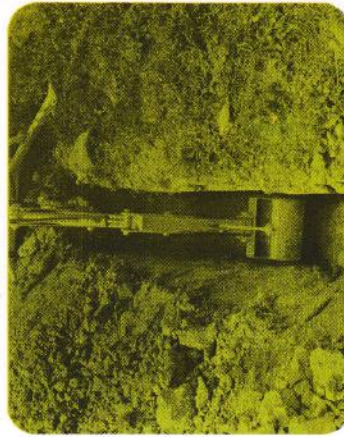
Tires: Dual, pneumatic, 4:00 x 8.

Fuel: Gasoline, Capacity, 1 3/4 gallons.

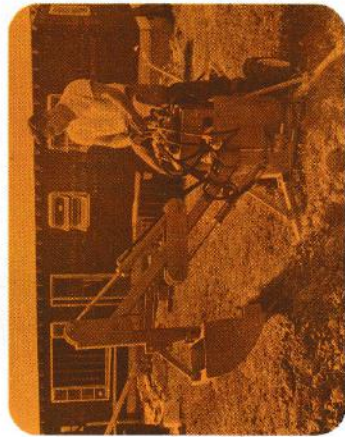
Weight: 1250.



GETS IN THE PLACES OTHERS CAN'T. Retract the legs, go through the garden gate, or into the backyard, between narrow buildings... into the tight corners where big equipment can't go.



DIGS DEEP, DIGS TRUE—AT LESS COST. Big equipment costs big money. The Gravely MiniBackhoe does the same job, at one-third the initial cost for bigger rigs. Digs to five feet deep, 16" wide.



BIG JOBS OR SMALL—EASY TO HAUL! Whether it's tile trenches for a septic tank or excavating for a basement, the MiniBackhoe does the job efficiently, at low cost.

CHOOSE THE TRACTOR AND THE TOOLS TO FIT YOUR JOB!

Gravely — The Tractor More People Own than any Other Single Brand...

Because it has been proved best by job test since 1917. You get the most modern design and efficiency in new and improved products from the world's oldest specialized manufacturer... over 50 years' experience in lawn and garden equipment... used to make your work easier and more efficient at reasonable cost.

FREE DEMONSTRATION FREE PRODUCT LITERATURE

Let us show you Gravely equipment—on your grounds, under your conditions. Our years of experience in counseling customers to enjoy the best equipment for their needs is at your service.

Specialized literature on each of the tractors shown in this folder is available from your dealer or from the factory. Ask for the complete catalog on the equipment of your choice.

PROUDLY SOLD AND SERVICED BY:

WM. A. SOMMER CO.
 4000 SO. DIXIE HWY.
 PH, WV, 1-3898 LIMA, OHIO

Authorized Gravely Sales and Service. Gravely dealers stock parts, have mechanics trained in factory methods to assure you of prompt counseling and service.

**GRAVELY®
TRACTORS**

A Division of Studebaker Corporation

GRAVELY LANE, DUNBAR, W. VA. 25064



GRAVELLY®

CONVERTIBLE



GRAVELLY'S CONVERTIBLES — from Rider to Walker, Instantly.

In two models . . . the Super, shown above, with the 40-inch Commercial-40 Rotary Mower. Super is complete with Starter, Rear Hitch, Attachment Clutch Control (A lever at the handles that actuates the attachment PTO), and Governor. Shown also with the New Convertible Rider . . . comfortable, easy-riding. Converts instantly, by pulling a pin, to a walking tractor . . . then attach the Rotary Plow, for example (right), and stroll along while the powerful Gravelly Tractor produces a perfect seedbed in one operation! 39 Attachments for all-season use.

RTIBLES Ride for the fun jobs... Walk for the tough jobs!

Convertible 7.6—Revolutionary!

Because Gravely's powerful, all-gear-drive tractor is convertible—instantly. For lawn mowing and many other tasks, the tractor does the work while you go along for the ride. But for the steep slopes and hills, heavy brush in rough terrain, or the garden... a walking tractor does the job fast and efficiently. Gravely gives you riding ease and speed, walking safety and control—with one powerful tractor. Is it any wonder that more people own Gravely Tractors than any other single brand?

ALL GEAR DRIVE

ALL GEAR DRIVE is the secret of Gravely's famous performance. No belts to slip, wear or keep adjusting constantly. Instead, all power is transmitted directly from the engine crankshaft to and through the transmission, and to the power implement by splined steel shafts and gears. Gravely's engine power is used where it counts... at the tool doing the job!

Year-Round, All-Season Versatility—39 Implements!

Mowing, lawn care, gardening or snow removal, Gravely has the specific tool to do your job, right. And most Gravely implements can be used interchangeably between the Convertible 7.6, Commercial 10, or Gravely 424. Changed quickly—two nuts and two bolts, or one pin.

Instant Control—Fantastic Maneuverability!

When you take command of a Gravely Convertible 7.6, you see one of its major advantages... out-front implements that give you maximum visibility and safety. Gravely's instant forward, neutral or reverse—with one quick movement of one lever—gives you fantastic maneuverability and precise control. Out-front design also gets under fences, into corners, under low-hanging shrubs easily. A flip of the lever and you back away—with power! Swiftmatic 8 Transmission offers 4 speeds forward and 4 speeds reverse—fits ground speed to the job with the flip of a lever!

See for yourself... try the Gravely Convertible 7.6—the riding tractor you can walk behind for the tough jobs!



CUSTOM CONVERTIBLE 7.6—the standard tractor without the starter, Attachment Clutch Control and Governor. The same rugged power... same dependable design. Shown with 26" Rotary Cultivator.

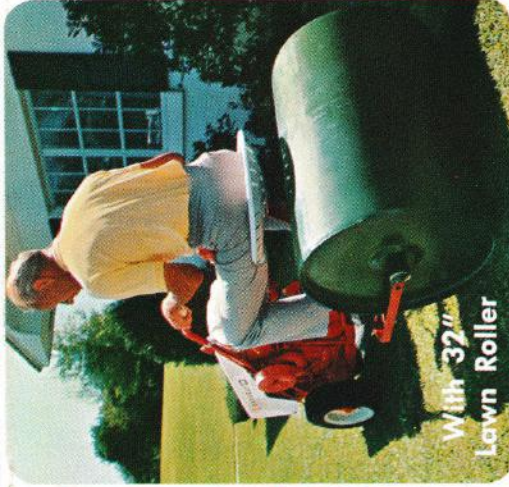


SPECIFICATIONS

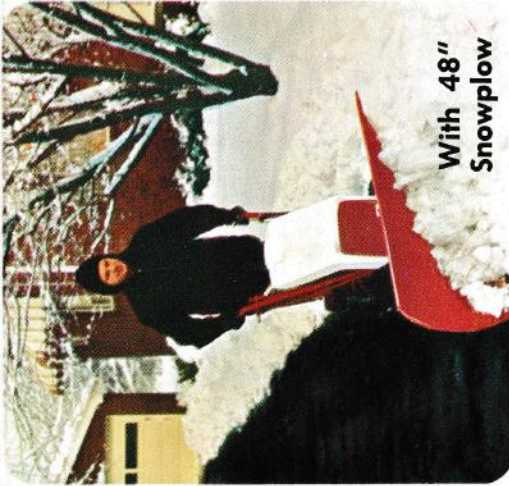
- Engine: Manufactured by Gravely especially for the Gravely Tractor. One cylinder, four-cycle T-head type with removable head. Air cooled by engine-driven fan.
- Bore: 3 1/4" inch.
- Stroke: 3 1/2" inch.
- Oiling System: Gear pump and splash, full-flow oil filter. Filled oil under pressure to connecting rod and drive shaft bearings.
- Bearings: Tapered roller or precision ball bearings.
- Horsepower: 7.6 at 3000 RPM
- Transmission: Alloyed iron and hardened steel. Precision cut teeth.
- Differential: Automotize gear type.



With Hauling Cart



With 32" Lawn Roller



With 48" Snowplow



With 2-

Use ALL these tools on the Convertibles—Convertible 7.6 or the Commercial-10! Fast ch



Large lawns get done fast with the new Commercial-40 Rotary Mower . . . full 40" cut with this heavy-duty, highly reinforced 40" Mower that purrs through the toughest industrial jobs.

Designed for
The Comm



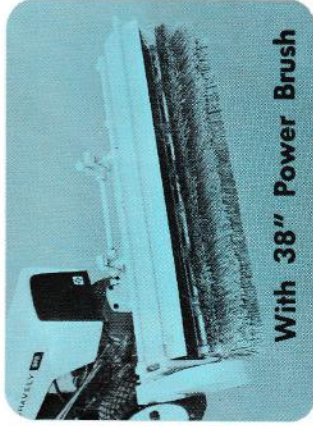


Heritage Snowblower

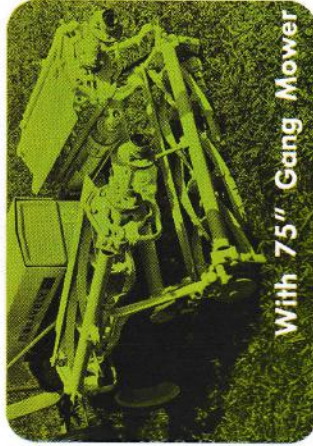


With 20-Gallon Sprayer

With Toolholder



With 38" Power Brush



With 75" Gang Mower

Mow the tough weeds and brush, work slopes as steep as 60% with optional dual wheels. Custom with Swiftamatic 8 gets the rugged work done in a hurry!

Clutch: Planetary gear system. Cast-iron bands bonded lining to heavy-duty grey iron casting. Safety Clutch: Power attachments individually protected from shock by safety clutch. Height: 28" (exclusive of handles). Width: 24" at widest point. Length: 55" (exclusive of attachments). Fuel Capacity: 1 3/4 gallons. Tires: 4.00 x 8.

range—two nuts and two bolts or one pin.

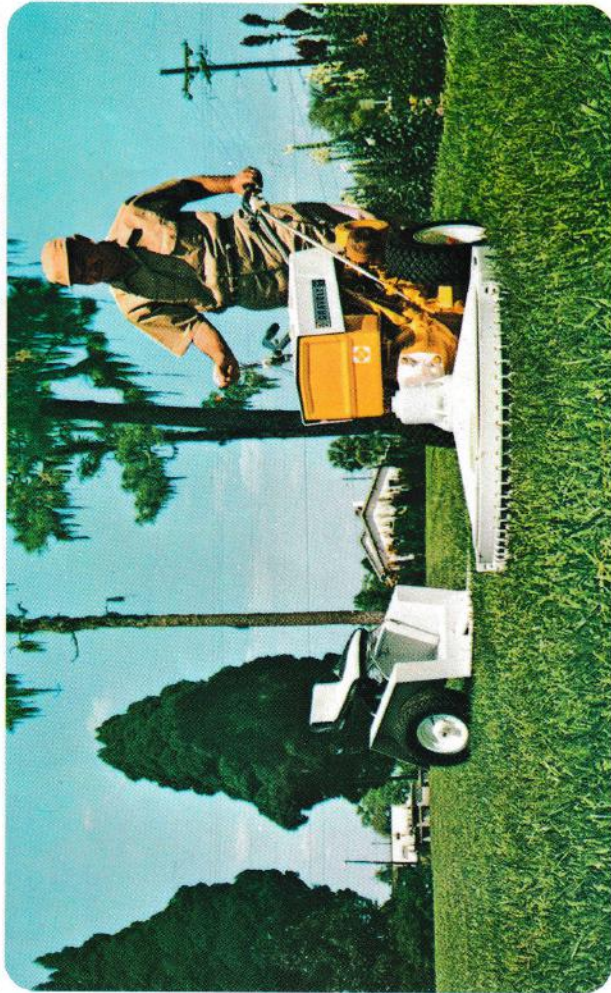
the Professional Groundsman— rcial-10—Quiet, smooth power!

Give your lawn and grounds professional care with the Commercial-10, used by the professional groundsmen in industry, government, and private contracting.

All gear drive . . . instant control with safety designed controls. A smooth, almost vibrationless 10 horsepower engine that purrs along effortlessly at the toughest jobs.

Uses 27 standard Gravely Implements . . . Converts instantly from a rider to a walker by pulling one pin . . . heavy duty all the way through, with the famous Gravely Swiftamatic 8 transmission, four forward and four reverse speeds.

Try one for yourself. See why the professionals prefer Gravely 2 to 1 over any other brand!



HEAVY-DUTY MOWING with the Commercial 10 and the 30" all-gear-drive Rotary Mower. Chain Guard, Optional, for added safety. Proved in 20 years of use by professional and homeowners alike.

Convertible Rider attaches or detaches in seconds. Comfortable rider for the big jobs—easy handling walker for trimming the tough-to-get-to areas, the slopes, hills, and heavy cutting.

SPECIFICATIONS

Engine: Gravely. One-cylinder, four-cycle, L-head type with removable head. Air cooled by centrifugal fly-wheel blower. Automatic compression release. Bore: 3 3/4 inch. Stroke: 27 1/2 inch. Bearings: Main bearings, precision ball. Horsepower: 10 HP at 3600 RPM. Transmission: Transmission and timing gears of alloyed iron and hardened steel. Differential: Automotive gear type.

Clutch: Planetary.

Safety Clutch: Power attachments individually protected from shock by safety clutch.

Height: 28" (to top of hood).

Width: 24" at widest point.

Length: 55" (without attachments).

Weight: Net 475 lbs.

Fuel Capacity: 1 3/4 gallons.

Tires: 4.00 x 8.

Starter: Electric starter-generator

Oiling System: Splash.

ALL GEAR DRIVE 10HP

**High Torque Engine Heavy-Duty
Almost Vibrationless Frame**

**Safety-Designed Out-front Tools
Instant Controls for Safety and
No Clutching Visibility**

Starter-Generator Key Ignition